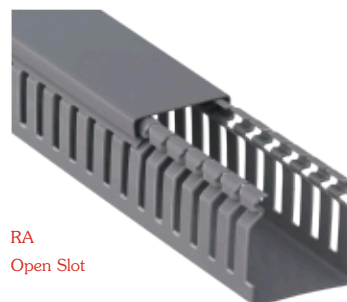


# Dutos - Industrial PVC Wiring Ducts

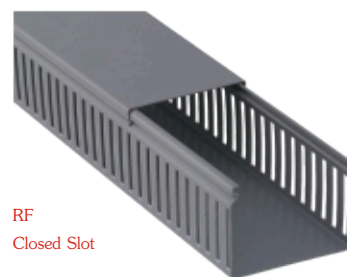
Solid CL	Open Slot RA	Closed Slot RF	Base mm	Height mm
101.068	105.068	109.068	15	15
101.069	105.069	109.069	15	22
101.070	105.070	109.070	22	22
101.071	105.071	109.071	30	30
101.072	105.072	109.072	30	50
101.073	105.073	109.073	50	50
101.074	105.074	109.074	80	50
101.075	105.075	109.075	80	80
101.076	105.076	109.076	110	50
101.077	105.077	109.077	140	50
101.078	105.078	109.078	30	80
101.079	105.079	109.079	50	80
101.080	105.080	109.080	50	35
101.081	105.081	109.081	80	35
101.082	105.082	109.082	110	80
101.083	105.083	109.083	22	30
101.084	105.084	109.084	30	38,5
101.085	105.085	109.085	60	50
101.086	105.086	109.086	80	126
101.087	105.087	109.087	110	126
101.088	105.088	109.088	50	126
101.089	105.089	109.089	100	100
101.090	105.090	109.090	150	50
101.091	105.091	109.091	40	40
101.092	105.092	109.092	40	70
101.093	105.093	109.093	70	70
101.094	105.094	109.094	60	40
101.095	105.095	109.095	40	80
101.096	105.096	109.096	60	100
101.097	105.097	109.097	80	100
101.098	105.098	109.098	40	100
101.099	105.099	109.099	60	60
101.100	105.100	109.100	30	60
101.101	105.101	109.101	120	60
101.102	105.102	109.102	30	40
101.103	105.103	109.103	80	60



CL  
Solid



RA  
Open Slot



RF  
Closed Slot



Gray



Cream



Blue



Oil Blue



Black

## Dutos - With Adhesive Tape

Code	Base mm	Height mm	Length mm
101.068B.2FT	15	15	2.000
101.069B.2FT	15	22	2.000
101.070B.2FT	22	22	2.000
101.071B.2FT	30	30	2.000
101.072B.2FT	30	50	2.000
101.073B.2FT	50	50	2.000
101.080B.2FT	50	35	2.000
101.081B.2FT	80	35	2.000
101.083B.2FT	22	30	2.000
101.084B.2FT	30	38,5	2.000
101.091B.2FT	40	40	2.000
101.094B.2FT	60	40	2.000

### Wiring Ducts Accessories



Code	Description
PLASTCS-30 90	90° Seam
PLASTCS-30 RETA	Straight Seam

### Fixaduto®



Code	Width	Length
701.001	4,5mm	10mm
701.002	6,5mm	10mm



# Extreme Wiring Ducts - Halogen-Free

Solid CL	Closed Slot RF	Open Slot RA	Base mm	Height mm
102.068	103.068	104.068	15	15
102.070	103.070	104.070	22	22
102.071	103.071	104.071	30	30
102.072	103.072	104.072	30	50
102.073	103.073	104.073	50	50
102.074	103.074	104.074	80	50
102.075	103.075	104.075	80	80
102.076	103.076	104.076	110	50
102.078	103.078	104.078	30	80
102.079	103.079	104.079	50	80
102.080	103.080	104.080	50	35
102.081	103.081	104.081	80	35
102.082	103.082	104.082	110	80
102.084	103.084	104.084	30	38,5
102.085	103.085	104.085	60	50
102.089	103.089	104.089	100	100
102.090	103.090	104.090	150	50
102.091	103.091	104.091	40	40

## Dutopiso®

Code	Description	Base mm	Height mm
512.196	DP1	25	12
512.197	DP2	50	10
512.198	DP3	50	20
512.199	DP4	30	10
512.196.1	DV1	Junction Box DP1	

Also manufactured with Adhesive Tape



DP1



DP2



DP3



DP4

## Dutoprático®

Characteristics:

U - type wiring duct with anchorage by means of support

Dimensions: 60x35mm

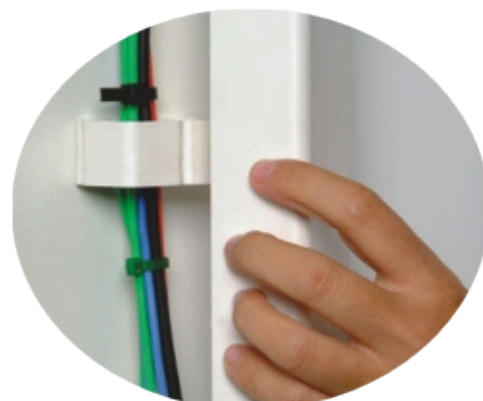
Color: Cream or Gray

Composition: Flame resistant PVC

Indications: Structured Cabling (telephony, data, images, etc)

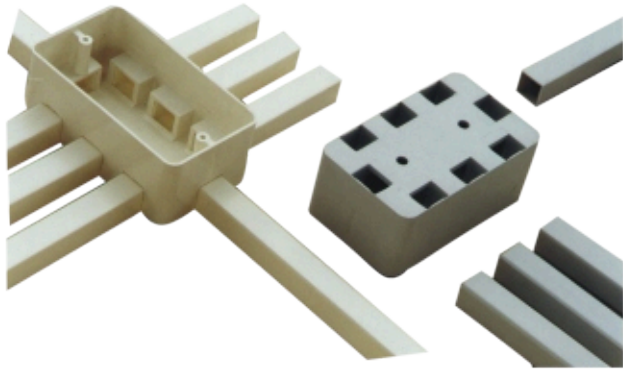
Product Code: 512.190

Support Code: 512.191



# Dutopop®

Also manufactured with Adhesive Tape



Code	Description	Base mm	Height mm	Length mm
512.195	<b>Dutopop</b>	16	16	2.000
<b>D300</b>	<b>Universal Box</b>			
512.195.2FT	<b>Dutopop</b>	16	16	2.000
	<b>*With Adhesive Tape</b>			
	<b>Colors: Gray or Cream</b>			



Sleeve  
512.195-1



Curve  
512.195-2



Clamp  
512.195-3

Wallplates



D-300-A



D-300-B



D-300-C



D-300-D



D-300-E



D-300-F



D-300-G



D-300-H



D-300-I



D-300-J



D-300-K



D300-L



D300-M

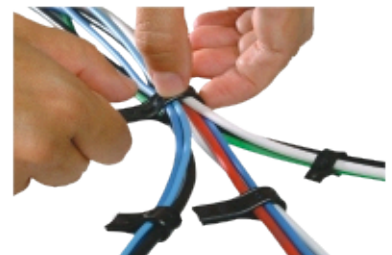
# Dutodin®

Code	Base mm	Height mm	Length mm
701.020	36	8,1	2.000
701.020.100	36	8,1	100
701.020.200	36	8,1	200



# Fitduto®

Code	Width mm	Thickness mm	Length m
701.050	8	1,0	25
701.051	10	1,2	25
701.052	12	1,2	25
701.053	Pins: 50 units		



# Articulated Mini Wiring Duct - With Adhesive Tape

Code	Base mm	Height mm
514.000.2FT	9,0	4,5
514.001.2FT	12,5	7,0
514.002.2FT	12,5	12,5

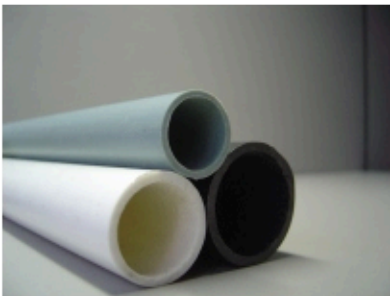


## Spiraduto®

Code	Rated Diameter mm	Internal Diameter mm	External Diameter mm	Maximum Embraced mm
201.050	1/8"	03,10	04,50	09,50
201.051	1/4"	04,60	06,40	19,05
201.052	1/2"	09,80	12,00	38,10
201.053	3/4"	17,00	20,00	57,15
201.054	1"	21,00	25,00	76,20



## Electroduct



### Electroducts with Thread

Colors: Cream, Black, Gray or Red

Sizes: 1/2", 3/4", 1", 1.1/4", 1.1/2", 2", 2.1/2", 3" and 4".

### Electroducts without Thread

Colors: Cream, Black, Gray or Red

Sizes: 1/2", 3/4" and 1".

### Sleeve

Non-Threaded Sleeve, available only in the dimensions of 1/2", 3/4" and 1".

### Curve

Curve of 1/2", 3/4" and 1" - supplied in the available colors.

Curve of 1.1/4", 1.1/2", 2", 2.1/2", 3" and 4" - supplied only in black.



Code	Dimensions Length x Width	Embraced Diameter	Strength Kg	Code	Dimensions Length x Width	Embraced Diameter	Strength Kg
401.049	90 x 2,4mm	15mm	8,0	401.067	250 x 4,8mm	60mm	22,2
401.050	100 x 2,5mm	18mm	8,1	401.068	920 x 9,0mm	263mm	79,4
401.051	120 x 4,8mm	24mm	22,2	401.069	1020 x 9,0mm	295mm	79,4
401.052	140 x 2,5mm	33mm	8,1	401.070	580 x 12,6mm	152mm	114,0
401.053	140 x 3,6mm	33mm	18,2	401.071	710 x 9,0mm	190mm	79,4
401.054	160 x 4,8mm	38mm	22,2	401.072	230 x 12,6mm	50mm	114,0
401.055	190 x 4,8mm	43mm	22,2	401.073	160 x 2,5mm	40mm	8,1
401.056	200 x 2,5mm	50mm	8,1	401.074	250 x 2,8mm	65mm	14,0
401.057	200 x 3,6mm	50mm	18,2	401.075	300 x 2,8mm	76mm	14,0
401.058	300 x 3,6mm	76mm	18,2	401.076	200 x 4,8mm	50mm	22,2
401.059	300 x 4,8mm	76mm	22,2	401.077	280 x 4,8mm	70mm	22,2
401.060	370 x 3,6mm	102mm	18,2	401.078	240 x 7,6mm	63mm	54,4
401.061	370 x 4,8mm	102mm	22,2	401.079	530 x 4,8mm	140mm	22,2
401.062	300 x 7,6mm	76mm	54,4	401.080	635 x 4,8mm	190mm	22,2
401.063	370 x 7,6mm	102mm	54,4	401.081	1070 x 9,0mm	320mm	79,4
401.064	430 x 9,0mm	110mm	79,4	401.082	1375 x 9,0mm	412mm	79,4
401.065	530 x 9,0mm	140mm	79,4	401.083	360 x 3,6mm	102mm	18,2
401.066	780 x 9,0mm	228mm	79,4	401.084	400 x 7,6mm	106mm	54,4
				401.085	380 x 12,6mm	106mm	114,0

Cable Tie for passing in Panel Plates Holes



Code	Dimensions Length x Width
DUT400CHD	200x7,6mm
DUT401CHD	370x7,6mm



Cable Tie with Clip for Installation in Plates



Code	Dimensions Length x Width	Diameter Embraced	Strength Kg	Plate Diameter
DUTGTP110M	110X2,5mm	22mm	8,1	2,4mm



Code	Dimensions Length x Width	Diameter Embraced	Strength Kg	Plate Diameter
DUTGTP130M	130X2,5mm	28mm	8,1	2,4mm

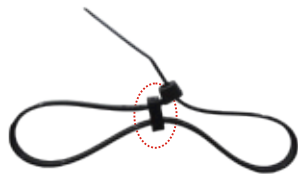


Cable Tie with Anchorage Hold

Code	Dimensions Length x Width	Diameter Embraced	Strength Kg
DUT BT250	235x20mm	73mm	20
DUT BT290	275x20mm	85mm	20

Code	Dimensions Length x Width	Diameter Embraced	Strength Kg	Plate Diameter
DUTGTP150I	150x3,6mm	32mm	13,6	2,8mm

## Double Loop for Cable Tie



Code

Dimensions of  
Cable Tie

401.051MI.LL	120x4,8mm
401.054MI.LL	160x4,8mm
401.055MI.LL	190x4,8mm
401.059MI.LL	300x4,8mm
401.061MI.LL	370x4,8mm
401.067MI.LL	250x4,8mm
401.076MI.LL	200x4,8mm
401.077MI.LL	280x4,8mm
401.079MI.LL	530x4,8mm
401.080MI.LL	635x4,8mm
400.001	Double Loop only

## Holder DUT-DT1

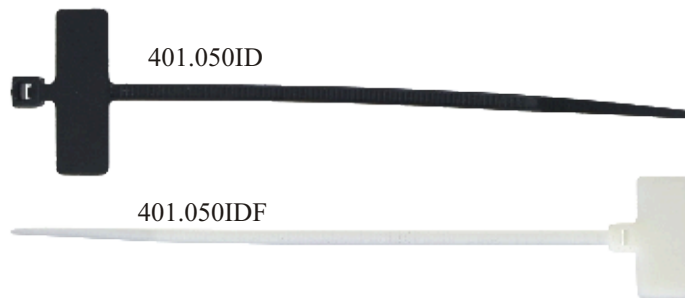


Code

Dimensions

702.001	20,5x13mm
Max. Widht of Cable Tie: 5mm	

## Identification System



Code

Dimensions

Package

401.050ID	100x2,5mm	100/1000 units
401.050IDF	110x2,5mm	100/1000 units

## Holder DUT-GT1



Code

Dimensions

703.001	45x16mm
Max. Widht of Cable Tie: 13mm	

## Holder DUT-CT1



Code

Dimensions

704.001	22x15,5mm
Max. Widht of Cable Tie: 8,2mm	

## Cable Tie secured by bolt



Code

Dimensions  
Length x Width

Diameter  
Embraced

Strength  
Kg

DUT200	200X4,8mm	50mm	22,2
DUT310	310X4,8mm	76mm	22,2

## Holders with adhesive Tape



Code

Dimensions

Max. Width of  
the Cable Tie

600.001	19x19mm	4,0mm
600.003	28x28mm	5,2mm

## Holder Element



Code

Dimensions

701.003	40,22x10mm
Max. Widht of Cable Tie: 9,6mm	

# Duto-X<sup>®</sup>

Apparent system of wiring ducts for passing wires and cables.  
Also manufactured with Adhesive Tape.



20x10mm

**Duto-X1<sup>®</sup>**



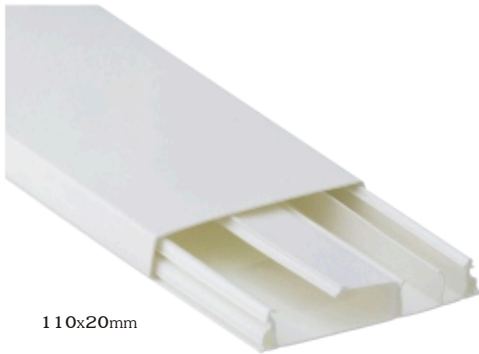
50x20mm

**Duto-X2<sup>®</sup>**



20x10mm

**Duto-X3<sup>®</sup>**



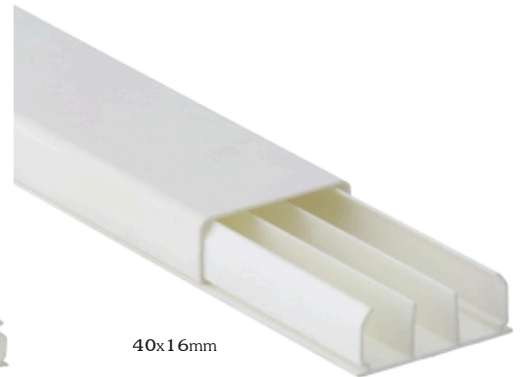
110x20mm

**Duto-X4<sup>®</sup>**



50x20mm

**Duto-X5<sup>®</sup>**



40x16mm

**Duto-X6<sup>®</sup>**

## Accessories



### Seam Fillers

Check the wiring ducts models to verify which accessories are compatible.



### Wall-Mounted Junction Boxes

Check the wiring ducts models to verify which accessories are compatible.



Dutoplast do Brasil Indústria de Plásticos Ltda.

Rua São Teodoro, 862 - Vila Carmosina

Zip Code 08290-005 - São Paulo - SP

Phone: +55 11-2524-9055 Fax: +55 11-2524-7699

[www.dutoplast.com.br](http://www.dutoplast.com.br) / [vendas@dutoplast.com.br](mailto:vendas@dutoplast.com.br)